

Turning Imagination
into reality



STONE KING ENTERPRISES



**GLASS FIBER
REINFORCED
CONCRETE**



STONE KING

A legacy that stands for Quality, Honesty and Innovation.

Stone King Enterprises is a Leader in manufacturing, supplying and installing cutting edge Construction Materials for architectural spaces that aspire to contribute to the creative vision and endeavors of Architects, contractors and designers. Our products include but are not limited to RCC Bollards, Main Hole Covers, Soccer Drain, all Tiles, Paving Tile, Kerb Stones, Cobbles, Tree Guards, Interlocking Paving Tiles and all types of precast products. We



transcend our competitors with our modern approach, varied range of quality products and textures, ease of installation, and most importantly our legacy that puts honesty and experience first. We at Stone King Enterprises Tiles ambitiously open up a world of possibilities to realize ideas into reality with our constantly developing tools and a culture that thrives on innovation while keeping utility and elegance in place.

STONE KING

Stone King has its history owed to its pioneers **Mr. Abdul Lateef and Son's** that have instilled the values of transparency, Honesty, and excelling quality to build relationships towards an innovative and creativity driven community of Architects and Engineers.



Ensuring the promise of delivering excellence, Stone King Enterprises extends the execution, application, installation and all services related of all the products. Stone King Enterprises, Urban Infratech and Maestro Construction creating an umbrella of solutions under the Stone King Banner.

REASONS TO ASSOCIATES WITH STONE KING ENTERPRISES

A partnership that backs you in *constructing innovative possibilities.*

Quality Products

We Follow strict safety and quality control procedures, that covers the whole process from detailing stage to handling over and maintain the high quality reputation of which we are proud, and for which we have received ISO 9000:2008 and we have obtained license of IS 15658:2006

Unmatched Versatility

The company offers various thickness, colour, size & design options for your project needs. We manufacture a wide range of product options specifically according to different project needs. The manufacturing techniques, surface textures and unique designs are available in a versatile palette to choose from.

Innovation at its Core

Our products are described as planet friendly, innovative, edgy, bespoke by our customer. We at Stone King Tiles ambitiously open up a world of possibilities to realize ideas into reality with our constantly developing tools and a culture that thrives on innovation while keeping utility and elegance in place.

Durable and Reliable

Stone King has set the industry standards for durability, slip-resistant design, and long-lasting reliability with resistance to erosion and cracks. Our products are thoroughly tested before supply to make sure a seamless installation process and putting worries elsewhere. Our team is also available at all times to support your project needs.

The SK Innovation Hub

We believe in collaborating and co-innovating with you and your remarkable ideas and therefore we have built an innovation centre where you can explore our manufacturing techniques and get inspired by our unique showcase to develop on your creative projects.

Experience that Matters

Originally founded in 1999, with over 20 year of excellence and trust in the industry, we proudly stand on our legacy and prove our credibility with a highly knowledgeable and proficient team. The continuous efforts and investment put in our production units and types of equipment, keep us a step ahead towards providing you with unique designs, quality, and time-proof products.

Honesty & Consistency

Transparency is key driving force of the family-oriented culture at Stone King. We believe in building relationships and nothing is more important for us than helping you build elegant spaces that articulate function and creativity. we thrive on an honest approach with leadership that ensures the best of experience at your disposal.

THE SK PROCESS

We use modern technologies to match our determination. The best of machinery and technical know-how to provide you with the perfect support



1

Architecture Drawing

We at Stone King work with architects and designers to understand their vision and convert their ideas to reality.

2

Cost Estimation & Project Award

We follow the project to the tender stage and work closely with bidding contractors to examine the complete scope of work. We share best practices for product installation, thus reducing time & cost

3

Shop Drawing Preparation

After the project is awarded we start working on the details. Our design experts shop drawings for the standard material to be made and how it will be installed.

4

Pattern Making

Shop drawings are then sent to the mould house where these are printed and marked on clay and POP and are further carved by both machines & sculptors based on the design

5

Mould Making

After completion of the pattern, moulds are made by following a standard procedure using Fibre Resin or Rubber.

6

Casting & Curing

Material is manufactured by spray or premix process and is based on the grade selected by client. It is kept under plastic sheets and allowed to set for 24 hours. It is then casted out and cured for 7-8 days until the desired strength is achieved.

7

Finishing & Packaging

Product is finished and packed considering the factors, how far is the destination, how fragile is the design etc.

8

Installation & Finishing

The installation process starts at the site with all necessary precautions and proper finishing of the product is done post installation as per client's satisfaction.

SK CUSTOMISE

Your innovation and our support allows us to customise products to suit your project creatively.

Choose a Shape

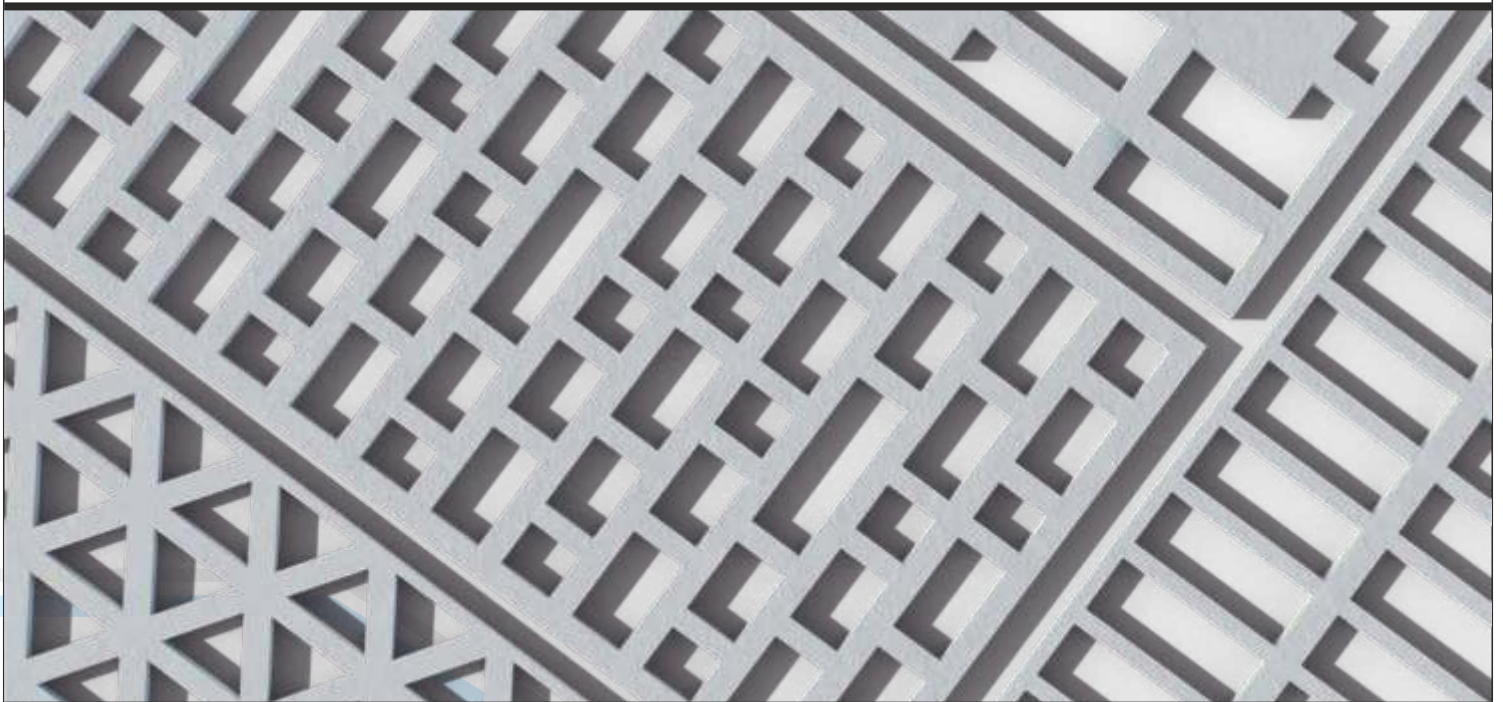
Choose a shape or create a new one with custom moulds according to a new design

Choose a Finish

Choose a Finish or create a new one with custom moulds and wetcast process that allows you to attain any texture according to a specific design.

Choose a Colour

Choose any colour and we have got you covered. Custom pigments allows you to attain any texture according to a specific design.



SK PIGMENTS

A Unique Collection of Colours that add to the elegance and finish of your projects.



Yellow
4905



Yellow
4910



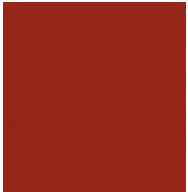
Yellow
4920



Yellow
4960



Dholpur
Premium



Red
4100



Red
4110



Red
4125



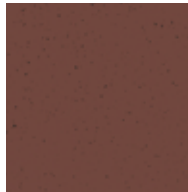
Red
4130



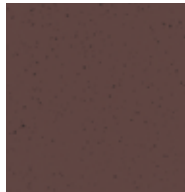
Red
4140



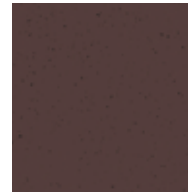
Red
4180



Brown
4610



Brown
4660



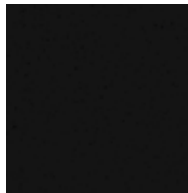
Brown
4686



Grey
Premium



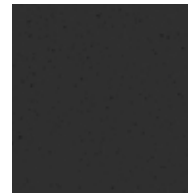
Black
4330



Black
Premium



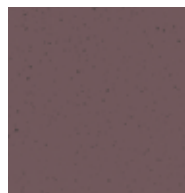
Maroon
Standard



Delhi Stone
Premium



White
Premium



Pink
Standard

ARCHITECTURAL PRODUCTS

Quality GFRC, & FRP products.

GFRC

Glass Fiber Reinforced Concrete

GFRC is a type of fiber-reinforced concrete composite of cement, glass fibers, aggregates and polymers. In Europe, development focused on the need to make to glass itself alkali resistant and at the end of 11940 a suitable glass formulation was identified containing zirconium and optimized to 17% and being alkali resistance this was used as reinforcement in concrete industry thus GFRC was born.

Stone King GFRC is non-combustable, with high flexural strength and have a unique range of colors and textures.

FRP

Fiber Reinforced Polymer

First developed in 1930's Fiber reinforced plastic has become a style in the building industry. The futuristic house of Disneyland "House of the future" brought a revolution in the market and by 1994 nearly 600 millions pound of composite material was used. Stone King FRP is a thermoset plastic composite material made from polymer resins, organic fillers, and glass reimpliment that achieve a high level of strength and A class fire and smoke rated.

GFRG

Glass Fiber Reinforced Gypsum

Gypsum is used to make economical and Eco-friendly construction material. Glass fiber is used as reinforcing agent which enhances the strength of the product. By using GFRG product, cement usage is reduced and thereby reducing environmental pollution. Since it's a waste product of fertilizer industry, it is economical. Stone King GFRG is non-combustable, easy to install and is light in weight as compare to traditional stone or plaster ornament.

JAALI/SCREENS

GRC Screen acts as a curtain against direct sunlight on glass to keep the building cool and also makes the building look aesthetically beautiful. Our exclusive range of GRC Screen is of utmost industry norm and standards. These are broadly admired by the customers for its durability and exotic looks. GRC Screen are tough, light weight and quick to install.



SK 28



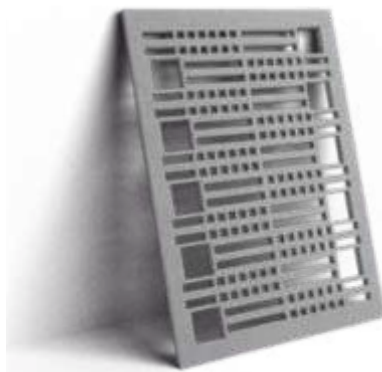
SK 29



SK 30



SK 31



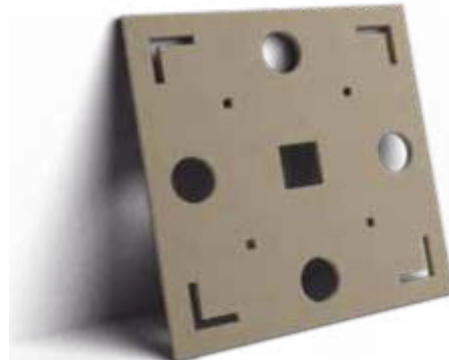
SK 32



SK 33



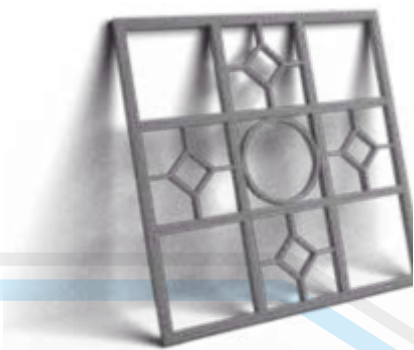
SK 34



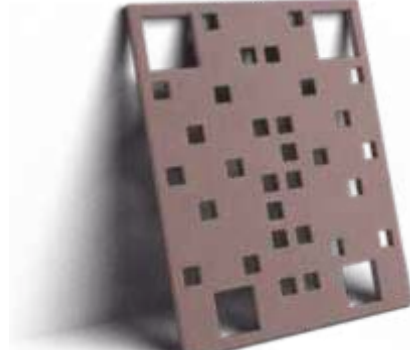
SK 35



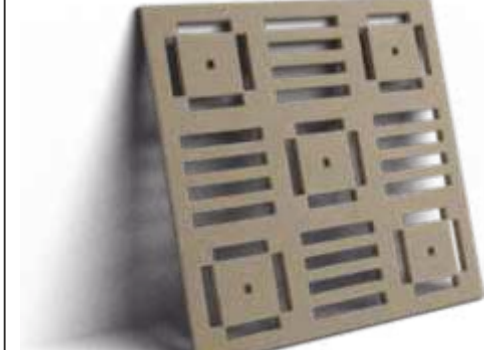
SK 36



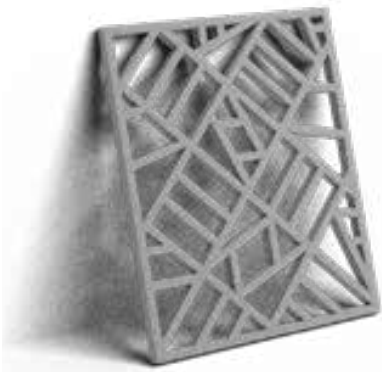
SK 37



SK 38



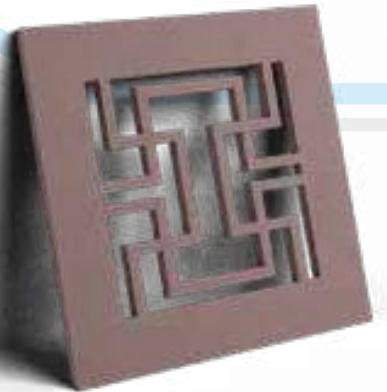
SK 39



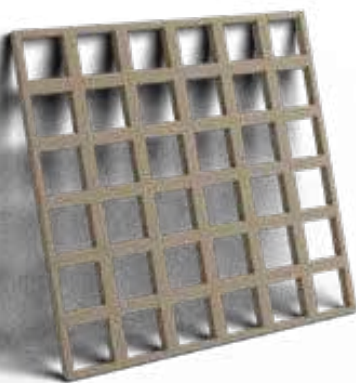
SK 40



SK 41



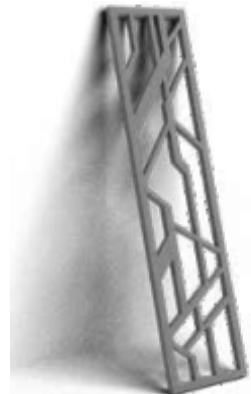
SK 42



SK 43



SK 44



SK 45



SK 46



SK 47



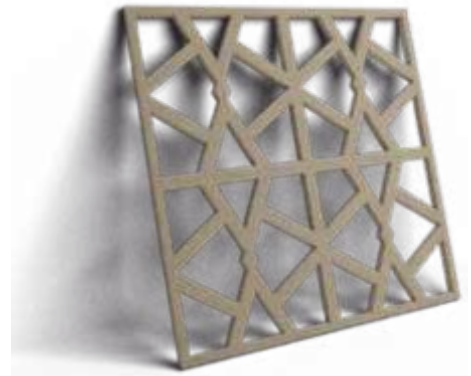
SK 48



SK 49



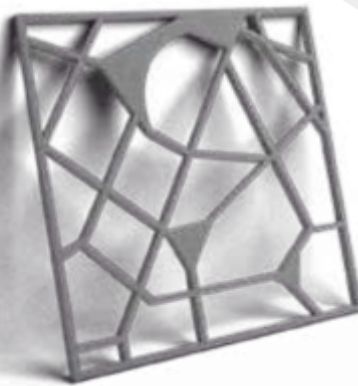
SK 50



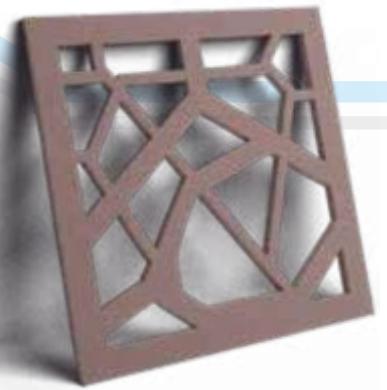
SK 51



SK 52



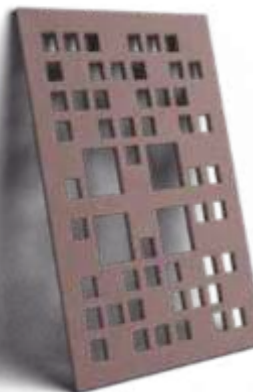
SK 53



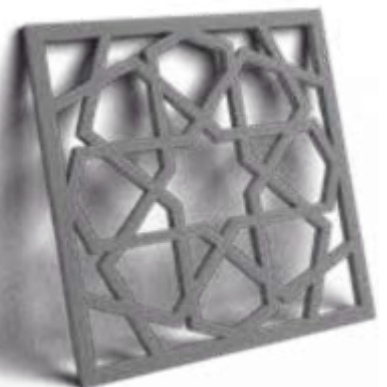
SK 54



SK 55



SK 56



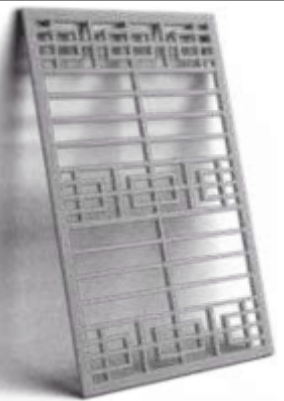
SK 57



SK 58



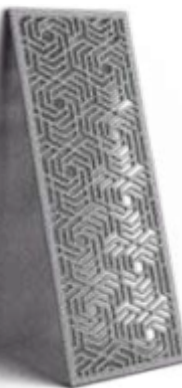
SK 59



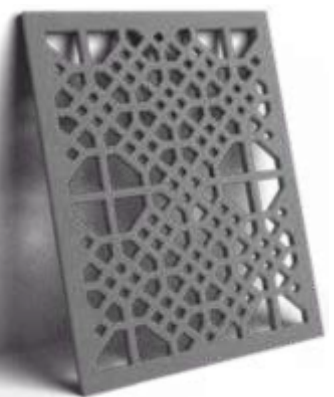
SK 60



SK 61



SK 62



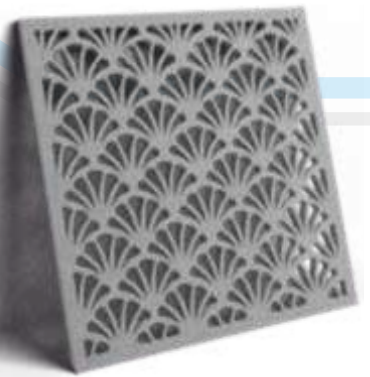
SK 63



SK 64



SK 65



SK 66



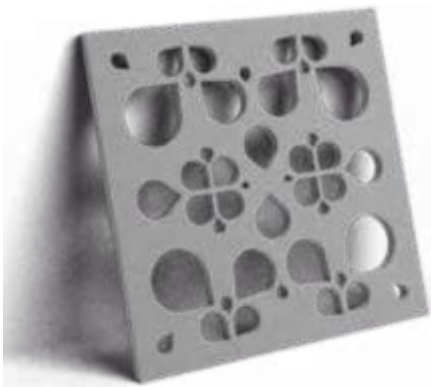
SK 67



SK 68



SK 69



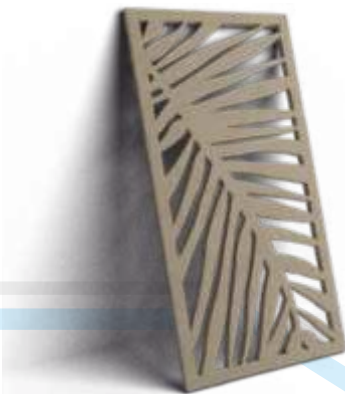
SK 70



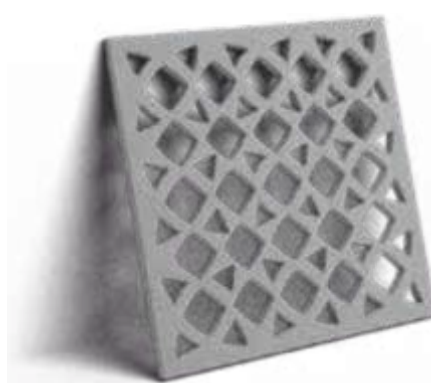
SK 71



SK 72



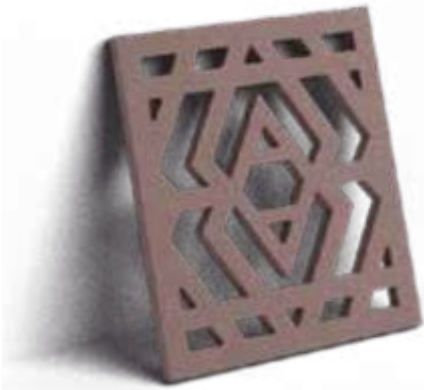
SK 73



SK 74



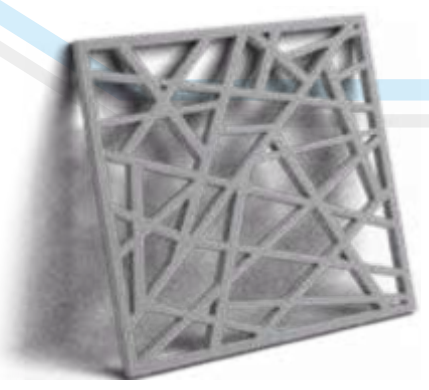
SK 75



SK 76



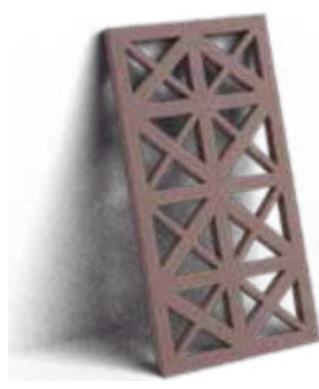
Sk77



SK 78



SK 79



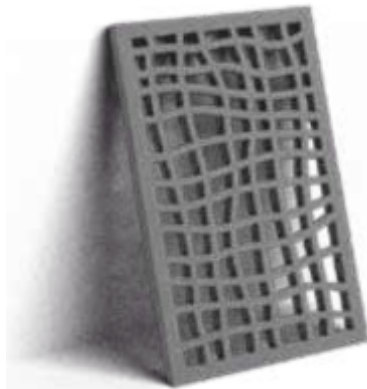
SK 80



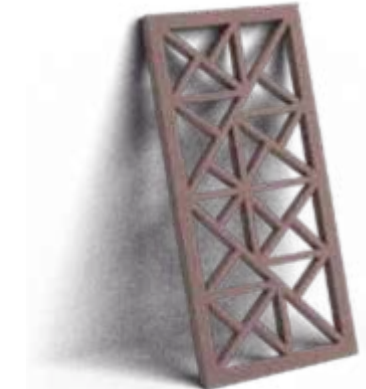
SK 81



SK 82



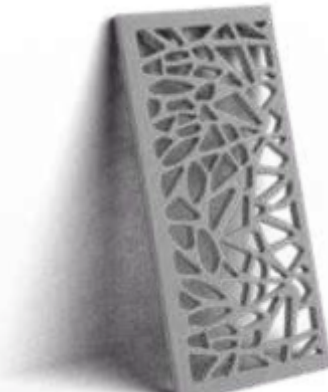
SK 83



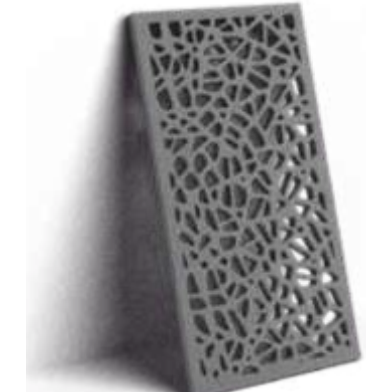
SK 84



SK 85



SK 86



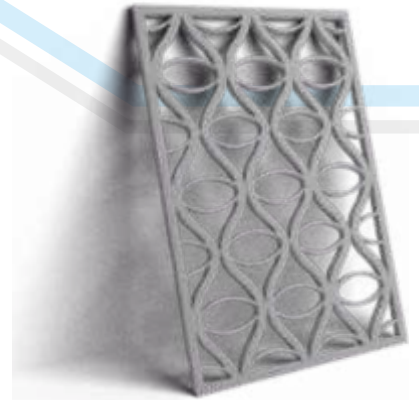
SK 87



SK 88



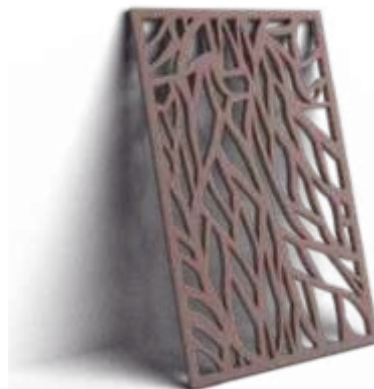
Sk89



SK 90



SK 91



SK 92



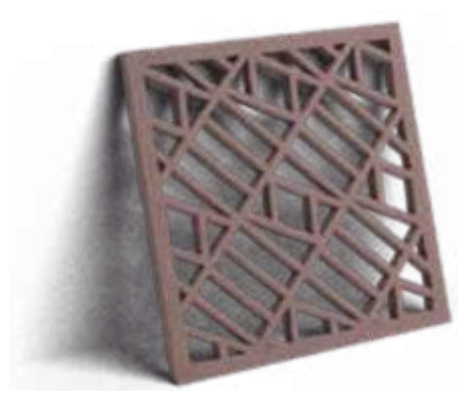
SK 93



SK 94



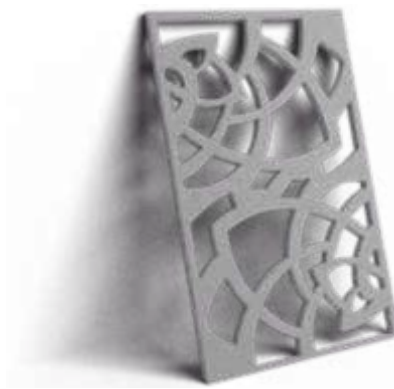
SK 95



SK 96



SK 97



SK 98



SK 99

COLUMNS

Architectural columns are an impressive element that can transform ordinary buildings into impressive and imposing masterpieces. Columns are one of our mainstay products, and we can craft beautiful hotels, contemporary resorts, and everything in between. Our Tuscan, Doric, Ionic, Corinthian, and Composite architectural columns are designed and manufactured in accordance with the highest standards of quality and craftsmanship, and we can also make custom columns if you're looking for something modern and unique. Our architectural columns can be found at restaurants, various plazas, Malls, government buildings, and institutions of higher learning. Our fiberglass and fiberglass reinforced columns are lightweight and weather-resistant, and they can be molded into a wide array of textures and shapes. We also offer a number of finishes, so your columns can be snow white or look exactly like bronze. Columns by SK-let your imagination run wild.

*Column fixing detail showing
MS Framework.*

*Note : All the following designs & dimension can be customized



SKCL01



SKCL02



SKCL03



SKCL04



SKCL05



SKCL06



SKCL07



SKCL08

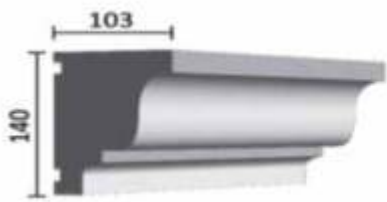
CORNICES

When you see architectural cornice below roofs and above windows and doors, its hard to believe that a simple horizontal projection can do so much to enhance the visual appeal of a building. Cornice has been used as an architectural design feature for centuries. Architectural cornice may, by strictest definition, simply be a “ledge,” but the aesthetic it can add to buildings makes it a design feature worth considering. Architectural cornices not only looks great, but can also help protect buildings. With some great architectural cornice, your energy bills will be lower and your building will be less likely to become stained or faded.

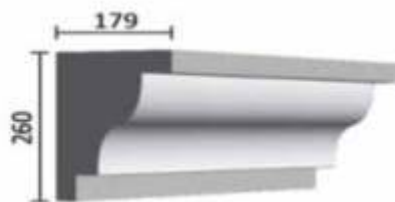
We offer an impressive selection of stock designs available in versatile GFRC, FRP and GFRG. Some are very simple, while others consist of several layers, making the architectural cornice a focal point of the building once installed. Experimenting with a combination of finishes can give architectural cornice a unique look.

*Cornice fixing detail showing
MS Framework.*

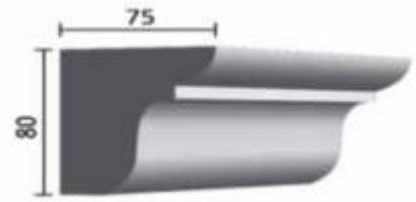
*Note : All the following designs & dimension can be customized



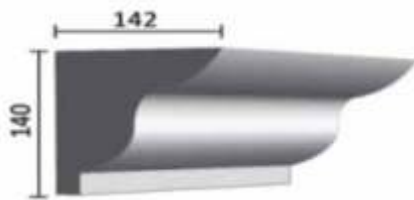
SKCR01



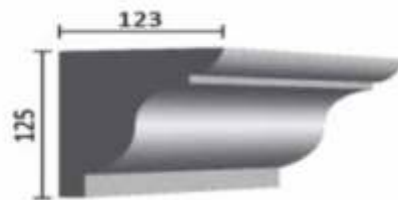
SKCR02



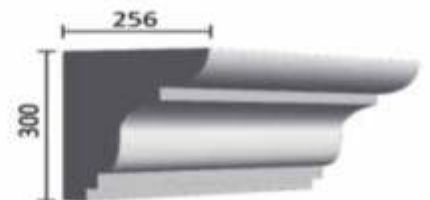
SKCR03



SKCR04



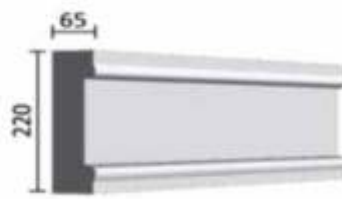
SKCR05



SKCR06



SKCR07



SKCR08



SKCR09



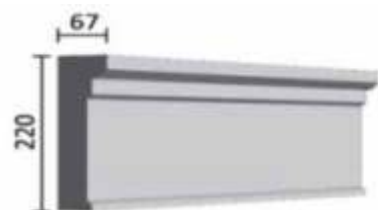
SKCR10



SKCR11



SKCR12



SKCR13

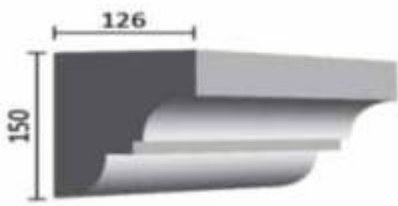


SKCR14

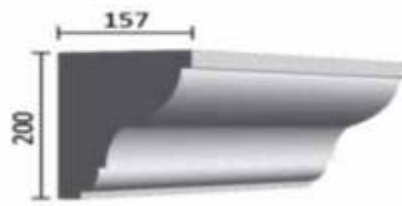


SKCR15

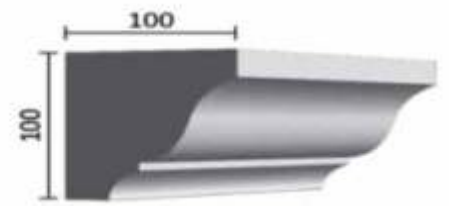
*Note : All the following designs & dimension can be customized



SKCR16



SKCR17



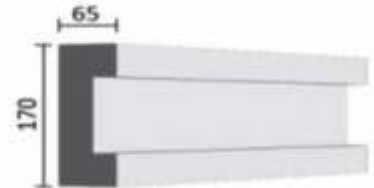
SKCR18



SKCR19



SKCR20



SKCR21



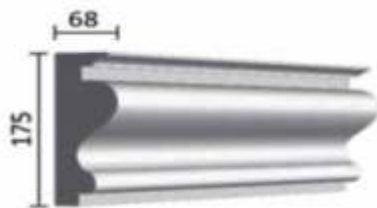
SKCR22



SKCR23



SKCR24



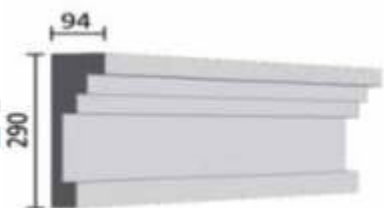
SKCR25



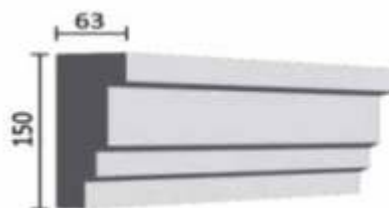
SKCR26



SKCR27



SKCR28

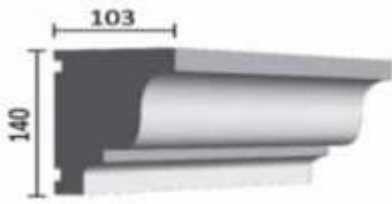


SKCR29

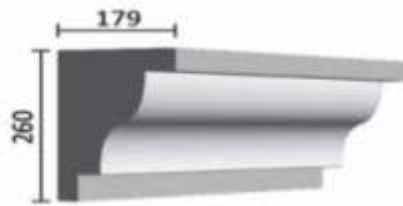


SKCR30

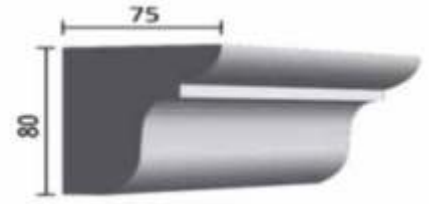
*Note : All the following designs & dimension can be customized



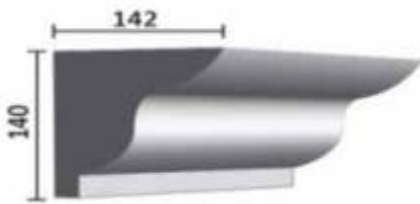
SKCR31



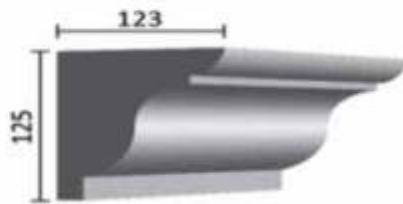
SKCR32



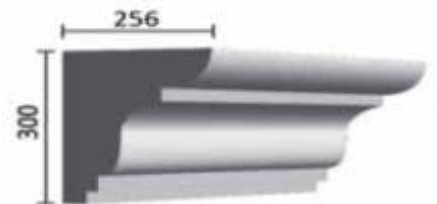
SKCR33



SKCR34



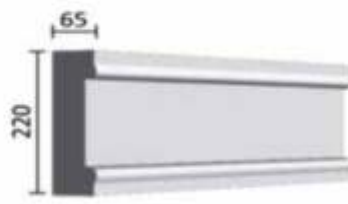
SKCR35



SKCR36



SKCR37



SKCR38



SKCR39



SKCR40



SKCR41



SKCR42



SKCR43

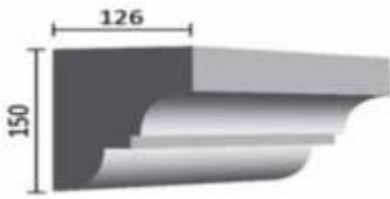


SKCR44

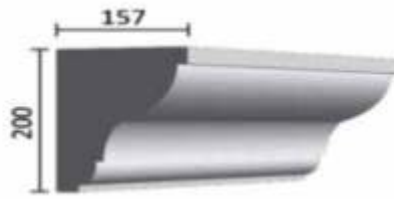


SKCR45

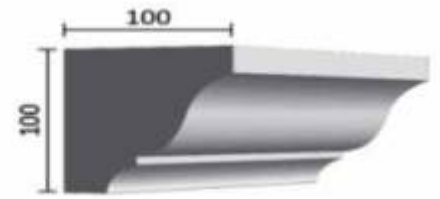
*Note : All the following designs & dimension can be customized



SKCR46



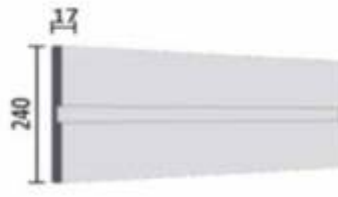
SKCR47



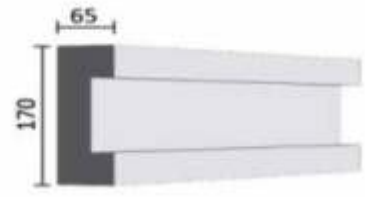
SKCR48



SKCR49



SKCR50



SKCR51



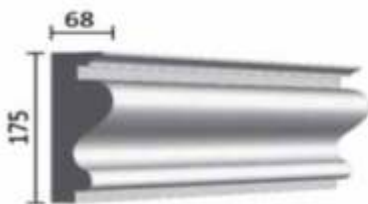
SKCR52



SKCR53



SKCR54



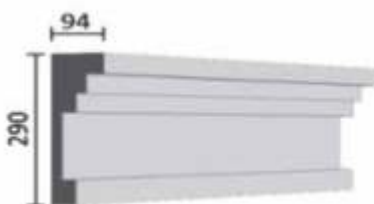
SKCR55



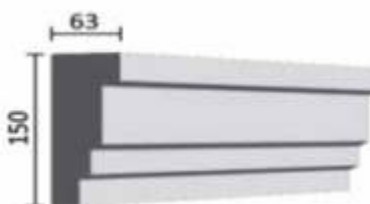
SKCR56



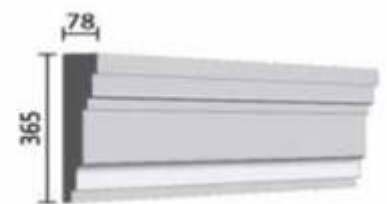
SKCR57



SKCR58



SKCR59



SKCR60

BOLLARDS

We offers an array of static architectural bollards. These bollards may be surface mounted or built into the ground. Movable bollards offer a sleeve that allows them to be moved necessary.

Bollards and security planters make streets safe for pedestrians, children and seniors. These are clearly visible barriers for off limit or sensitive areas and can withstand high-impact vehicle collision. They can be permanent, movable or planter bollards.

*Note : All the following designs & dimension can be customized



SKBD01



SKBD02



SKBD03



SKBD04



SKBD05



SKBD06



SKBD07



SKBD08



SKBD09

*Note : All the following designs & dimension can be customized



SKBD10



SKBD11



SKBD12



SKBD13



SKBD14



SKBD15



SKBD16



SKBD17

CORBELS / BRACKETS

In its most basic form, an architectural bracket is simply an L-shaped structure that is used to support roof eaves, bay windows, balconies, and other add-ons to a building's exterior. Brackets are installed in such a way that the vertical portion rests flat against the wall of the building while the horizontal portion protrudes out from the wall to support the structure. Soon after brackets began being used in construction applications, individuals noticed that this architectural element, in addition to being very practical, was also quite striking. Today, many brackets serve a decorative rather than a functional purpose.

The beauty of our brackets can be enhanced with intricate scrollwork, exciting textures, and truly amazing finishes. Our materials can mimic the look of such more expensive materials like quarried stone, bronze, gold, and limestone, and the use of molds allows us to achieve precise and perfect results each and every time. With our beautiful and functional brackets, there's no need to settle for boring.

*Note : All the following designs & dimension can be customized

**SKCR01****SKCR02****SKCR03****SKCR04****SKCR05****SKCR06****SKCR07****SKCR08****SKCR09****SKCR10****SKCR11****SKCR12**

*Note : All the following designs & dimension can be customized



SKCR13



SKCR14



SKCR15



SKCR16



SKCR17



SKCR18



SKCR19



SKCR20



SKCR21



SKCR22



SKCR23



SKCR24

*Note : All the following designs & dimension can be customized

**SKCR25****SKCR26****SKCR27****SKCR28****SKCR29****SKCR30****SKCR31****SKCR32****SKCR33****SKCR34****SKCR35****SKCR36**



BALUSTERS

If you're looking for balusters for your pool area, the grand balcony of your hotel dining room, or the curved spiral staircase that leads to the lavish guest suites in your hotel, finding a company that can deliver exactly what you want is essential.

By incorporating these elements, convert your plain balcony and staircase into stunning architectural elements that will dramatically improve the appeal and value of your building.

Whichever type of baluster you choose, we will ensure it is precisely and perfectly crafted to complement your staircase, deck, balcony, or garden.

*Note : All the following designs & dimension can be customized



SKBL01



SKBL02



SKBL03



SKBL04



SKBL05



SKBL06



SKBL07



SKBL08



SKBL09



SKBL10



SKBL11



SKBL12



SKBL13



SKBL14



SKBL15



SKBL16

*Note : All the following designs & dimension can be customized



SKBL17



SKBL18



SKBL19



SKBL20



SKBL21



SKBL22



SKBL23



SKBL24



SKBL25



SKBL26



SKBL27



SKBL28



SKBL29



SKBL30



SKBL31



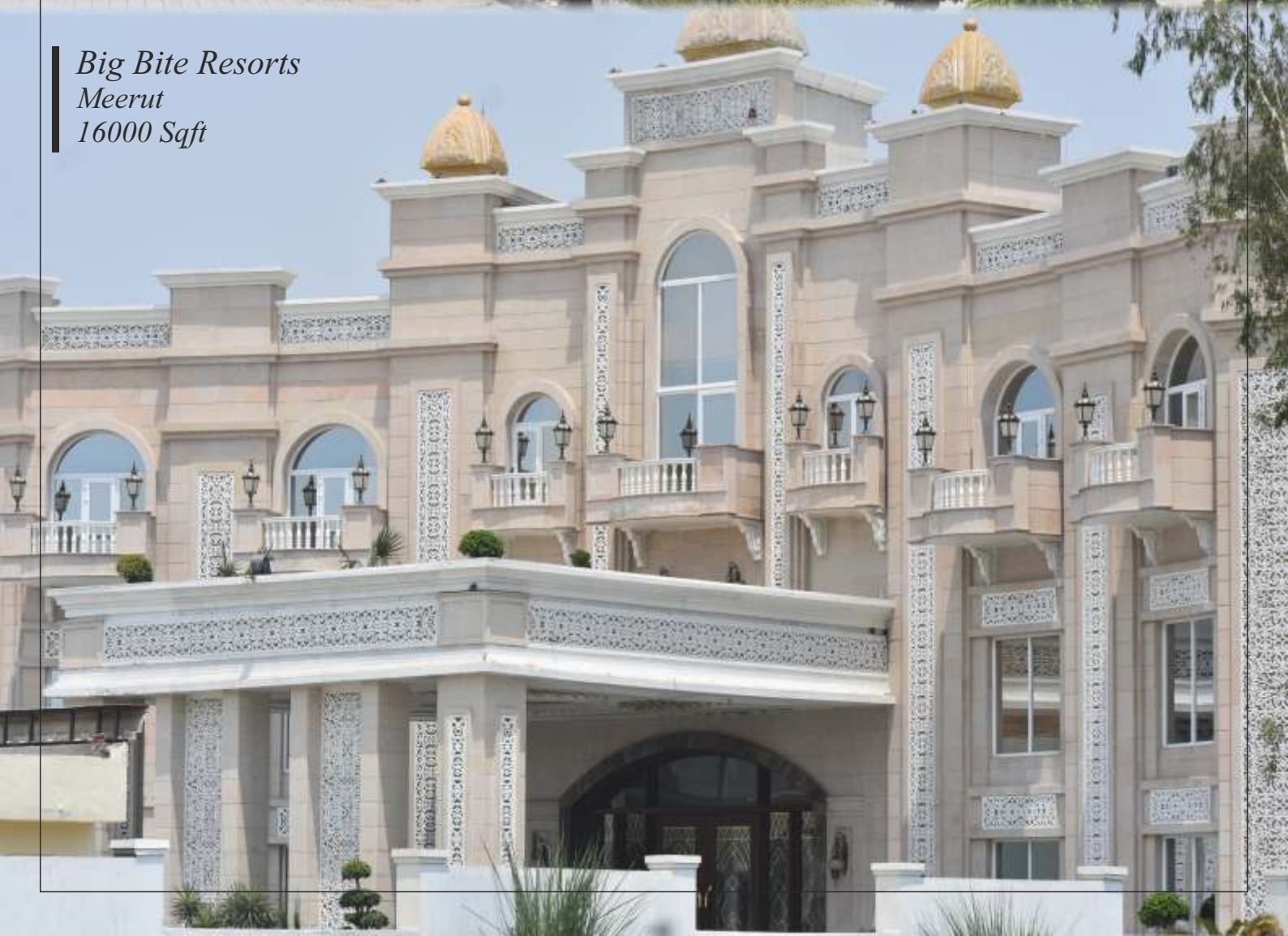
SKBL32

DOME

Domes are an extraordinary addition to any building. We specialize in coffered, onion, interior domes and cupolas. Domes can make any building look attractive and different. Our unique designs are not just crack proof but highly durable.



Big Bite Resorts
Meerut
16000 Sqft





Palm Kunj
Ghaziabad
11,500 Sqft



Arc. Vinayak Gupta
Moradabad
5000 Sqft



*Vinay Agarwal
Shahjhanpur*



Aditya Complex
Modipuram, Meerut
7000 Sqft





Rishita Manhattan
Lucknow
35000 Sqft



Rishita Malberry Height
Lucknow
61000 Sqft



B.C.C Nowasta Green
Lucknow
28000 Sqft



Shalimar Mannat
Lucknow
25000 Sqft

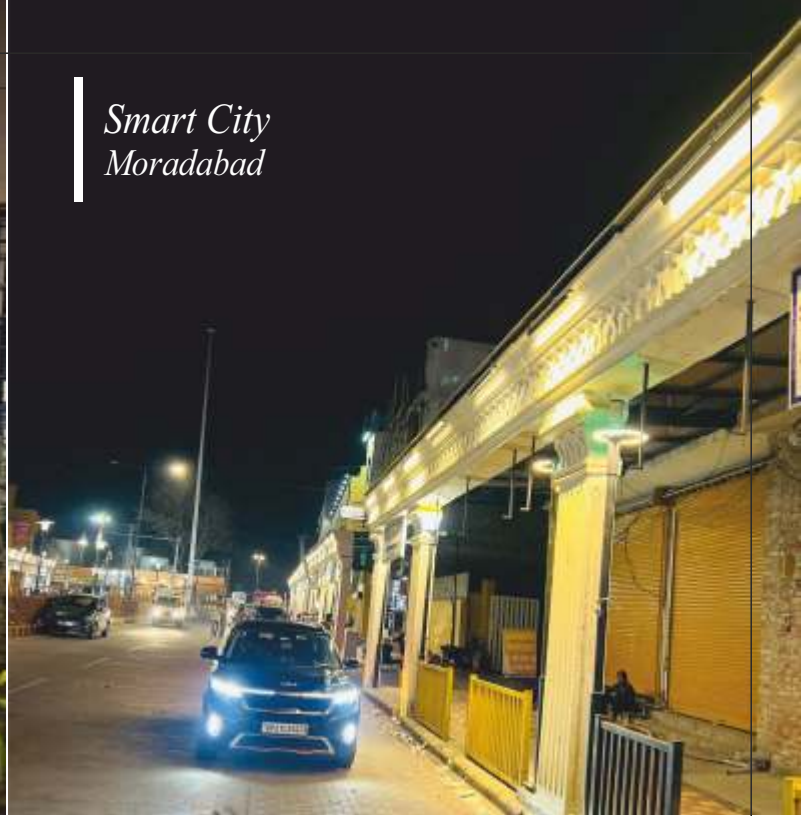


Eva Developers
Central Court (Moradabad)
20000 Sqft





Smart City
Moradabad





FAQs

From Architects and Designer

We have a design concept and would like to understand how your materials can help achieve it, or provide a solution for a particular technical issue. What can you do to assist us?

Stone King regularly works with architects and designers at the design stage to understand their vision and help bring concepts to reality. We are pleased to discuss material and installation options, technical performance attributes and provide details. More often than not, the earlier we are asked to contribute, the more likely we can provide a useful solution.

We have project where we have encountered budget constraints and must now “value-engineer” the design. How can you assist us?

We are pleased to review drawings and material options previously specified in order to identify opportunities to substitute materials, construction, speed up installation, and ultimately save money. Honest, forthright advice is what we are known for, even if it does not result in use of our materials or solutions on a given project it is more likely that we can provide a useful solution.

Are you able to provide technical input on a complex new design we are working on?

Yes, we are happy to review drawings and identify opportunities where use of our solution can address a technical challenge. We do not charge for this service, but if asked to develop 3D models or other technical documentation, or must fabricate a proof of concept mock-up, charges may apply. Our hope, however, is that our input results in Stone King being specified in the project, and that we will earn the opportunity to be part of it.

We are interested in learning more about your materials and solutions. How do we obtain more information?

You can anytime contact us and if required we will send our local representative who could give you complete information about our products.

From Contractors

We sometimes obtain products on a “supply and install” basis. Can Stone King offer service?

Because we supply all across India, it is not always economical or practical to transport people from the factory over long distances to job sites where they may have to wait on other trades. Often, given local laws and business requirement, we may not be able to offer installation, even if we would like to. There are certain situation in India where “supply and install” service is applicable. Otherwise, we would be happy to recommend proven contractors that we have worked with in the past.

How do I obtain pricing fort a job we are quoting, or have already secured?

Prices are quoted on project-by-project basis. As a custom manufacturer, price is normally comprised of tooling and material costs, and is influenced by quantity, complexity, lead time, and factory finishing (if specified). Requests for pricing are best submitted by sending an e-mail to stonekingenterprises325@gail.com.com. Be sure to provide the name of the project, its location, relevant plans, sections, and quantity take-offs (if available). Please clarify when the quotation is required, and your complete contact details. A member of our estimating team will contact you to acknowledge receipt and clarify any issues once they’ve had the opportunity to initially review the details you’ve provided.

What is your typical lead time for an order? How can we reduce it?

We always manufacture to order. Therefore, we do not maintain an inventory of products ready to ship. Lead time depends on the size and complexity of an order, plant capacity, and the customer’s project schedule, but is always contingent on the receipt of approved shop drawings by the architect. Lead time are always calculated from the time approved drawings are received by Stone King. We will work closely with the project job site to establish and meet critical deadlines. Typically, products can be shipped to a project work site in three to ten weeks after shop drawings are approved. Specific lead-times are quoted, based upon the then current factory schedule, by a member of our Estimating Team at the time of Quotation. Partial shipment can be arranged to meet difficult or short lead times. Lead times can be streamlined by ensuring that Stone King has the most current version of the architectural drawings, either as an unlocked PDF file or a DWG file. From these drawings, we can prepare our own shop drawings. Lead time can also be reduced by ensuring prompt turnaround of the approved Stone King shop drawings by the architect.

II OUR VALUABLE CLIENTS II



MI RUSTLE COURT
Live Life Euro-Style

rishita
DEVELOPERS



CORPORATE DESIGN



STONE KING
ENTERPRISES

All Kind Manufacturing of GFRC, FRP & Concrete products

Office: Near Sambhal Filling Station, Village Begumpur,
Distt. Sambhal, Uttar Pradesh-244302

E-mail: stonekingenterprises325@gmail.com



Turning Imagination
into reality



STONE KING
ENTERPRISES
CONCRETE REDEFINED

OUR STORY : 20 YEARS HERITAGE OF VISION PASSION AND EXCELLENCE

Established in 1990, a company named Stone King was created through the vision of Mr. Abdul Lateef who possessed and innate understanding of form a sharp mind for engineering, a natural curiosity for materials and strong entrepreneurial values and with the help of his Sons Mr. Mohd. Waseem Warsi, Mr. Kaleem Warsi & Mr. Aleem Khan who possessed deeper understanding of market dynamics demand and finances. The company grew successfully because of commitment of excellence, innovation. Exceeding customer expectations and banding a passionate and committed dream.

With customer Preference and market demand our product range diversified and we become successful in becoming the largest manufacturer and supplier of Precast paving products in north India. Now we manufacture all kind of precast products for architectural usage in various materials as per project requirement.

Our products are described as planet friendly, innovative, edgy, bespoke by our customers.

We Follow strict safety and quality control procedures, that covers the whole process from detailing state to handling over and maintain the high-quality reputation of which we are proud.

We Hope to serve you soon

Mr. Mohd. Waseem Warsi
Director and CEO



CG Grass Pavers

Grade M-30 to M-50



Code : SK 01
Size : 600 x 400 x 70



Code : SK 02
Size : 265 x 265 x 60



Code : SK 03
Size : 300 x 300 x 60
250 x 250 x 80

GO GREEN

Green your Driveway, pathway with Stone King Grass paver, designed to facilitate a perspicuous improvement to the amenities and biodiversity in and around the project. Helps to lower carbon footprint & it reduce source water pollution.





CG INTERLOCKING PAVERS

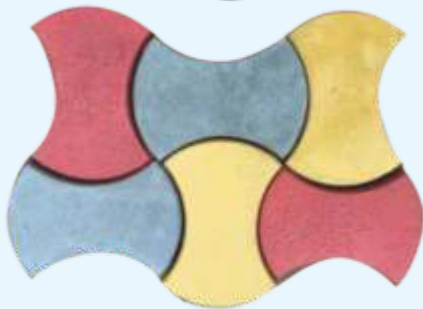
IS:15658:2006
(Grade M-30 to M-50)



Code : SK 01
Size : OUTER 270 Thick, 60,80



Code : SK 02
Size : 250x125 Thic. 50, 60, 80, 100



Code : SK 03
Size : 260x180 Thic 60

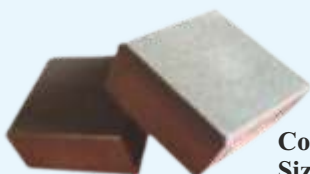


Code : SK 04
Size : 198x158 Thic. 50, 60, 80, 100

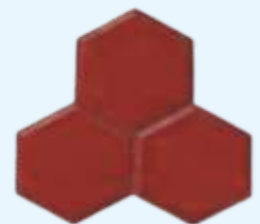


CG INTERLOCKING PAVERS

IS:15658:2006
(Grade M-30 to M-50)



Code : SK 05
Size : 300 x 300 / 200 x 200
150 x 150 / 100 x 100
Thick. 60, 80



Code : SK Trihex
Size : 60/80 mm thickness





CG Bricks Pavers

IS:15658:2006
(Grade M-30 to M-50)



Code : SK 06

Code : SK CB01

Code : SK CB02

Code : SK CB03

Code : SK CB04

Size : 300 x 200 / 300 x 150 / 200 x 100 Thick. 60



COMBI PAVERS

IS:15658:2006
(Grade M-30 to M-50)



Sizes :

100 x 100 x 60/80
100 x 200 x 60/80
200 x 200 x 60/80
200 x 300 x 60/80
300 x 300 x 60/80
400 x 400 x 60/80
150 x 150 x 60/80

Colours :

- YELLOW
- RED
- BLACK
- DHOLPUR
- GREEN
- GREY



Combi Pavers

IS:15658:2006
(Grade M-30 to M-50)



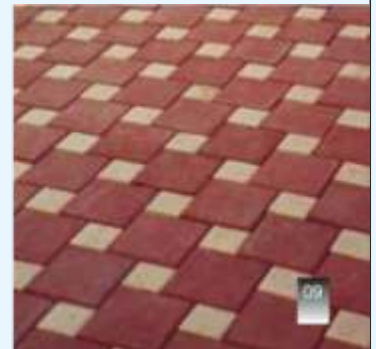
Code : SK 01



Code : SK 02



Code : SK 03



COMBI PAVERS

IS:15658:2006
(Grade M-30 to M-50)



Shot Blasted Paving find a reflection of the texture and colours in the nature. Manufactured using state of the art machinery using some of the most wear resistance aggregates that the provided by nature.

This surface finish is possible in all type of tiles in this catalogue.





Heat Resistant Terrace Tiles



During peak summer, concrete slab temperature reaches around 60 to 65 °C. Under similar conditions, DHRT surface temperature reaches around 48° C. DHRT effectively reduces (at full noon) 12 to 17 °C surface temperatures of the slab, and thereby arrests solar heat absorption. Radiation effect of the slab is minimized (which take place from 5.0pm till late night) due to minimized heat gain of the slab. Thus DHRT works as a Radiant Barrier.

In winter since the sun's radiation is weak we get a temperature difference of only 2-3 Deg. or even less if there is fog. That means the temperature of the tile and bare slab are almost same and there is no excessive cooling. However since DHRT are insulating they can arrest the heat loss through the roof during winter.

DHRT Specification Type	White Cement Bounded/Multi-Layered
Polishing	Just like mosaic tiles
Method of Fixing	Just like any mosaic tiles
Materials Used	Infrared Resistive Composition (Non Degradable)
Emittance	0.93
Tiles Sizes	300mm x 300mm
Solar Reflectance Index (SRI)	90.7
Initial Emittance	0.79
IS Standard	As per IS 1237-1980
Water Permeability	Impervious to Water
Modulus of Rupture (Wet)	53 kg/cm2
Reflectance	0.73
Average Water Absorption	7.5
Appearance	White
Weight	4 kg/ft2 (43 kg / m2)
Tile Thickness	20 MM (+/-2mm)

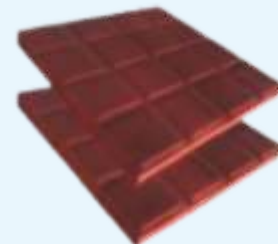
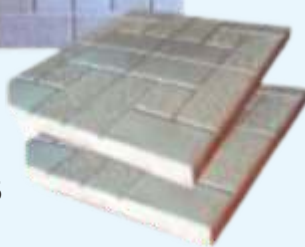


CC/GRC CHECKERED DESIGNER TILES

Grade M-30 to M-50



Code : SK 07
Size : 300 x 300 x 25



Code : SK 08
Size : 300 x 300 x 25



Code : SK BU
Size : 300 x 300 x 25



Code : SK 09
Size : 300 x 300 x 25

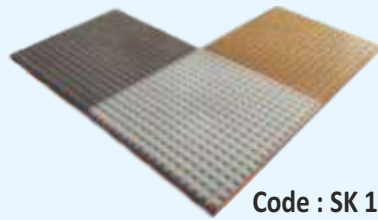
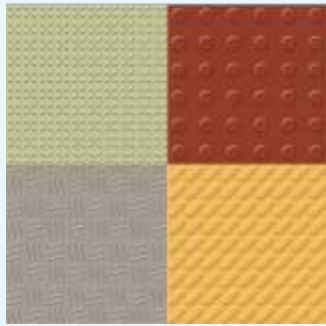


Size : 100 x 100 x 25

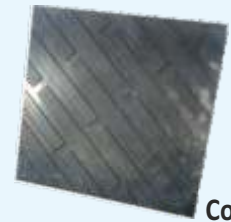


SFRC Manhole Covers & Frames

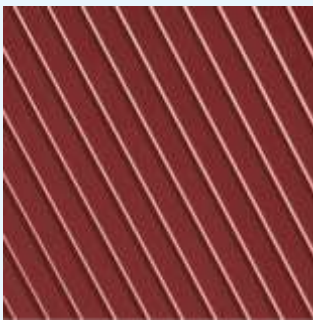
(Grade M-30 to M-50)



Code : SK 10
Size : 300 x 300 x 25



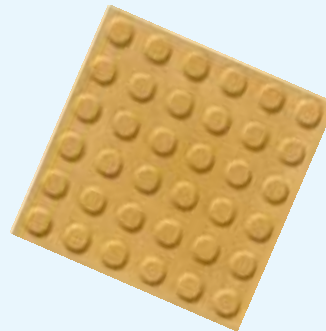
Code : SK 11
Size : 300 x 300 x 25



Code : SK 12
Size : 400 x 400 x 25



Code : SK 13
Size : 300 x 300 x 25



Code : SK 14
Size : 300 x 300 x 60



Code : SK 15
Size : 300 x 300 x 60



COBBLE STONE PAVERS

Grade M-30 to M-50



Code : SK 01
Size : 100 x 100 x 60



Code : SK 02
Size : 200 x 200 x 60



Code : SK 03
Size : 150 x 150 x 22



Code : SK 04
Size : 150 x 150 x 60





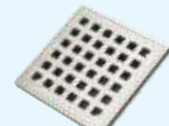
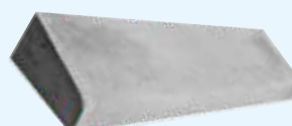
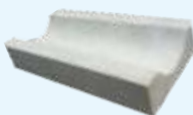
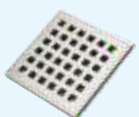
Technical Details of SFRC Manhole covers and frames

Item Description	Frame Details			External size	Thickness
	Clear	External size	Height		
Extra Heavy Duty 35MT Circular	560 Dia	870 Dia	175	715	100
Heavy Duty 20MT Circular	560 Dia	870 Dia	155	715	90
Heavy Duty Rectangular	600x600	830x830	125	710x710	90
	600x450	830x740	155	750x610	90
Medium Duty Circular Rectangular Rectangular	560 Dia	770	110	670 Dia	70
	600x600	800x800	100	700x700	70
	600x150	800x850	100	710x560	70
Light Duty Rectangular	600x450	770x620	60	660x520	50
Road Gully Medium Duty Light Duty	500x450	680x630	120	570x520	70
	500x450	650x610	110	560x510	50
Gully Trap Light Duty	260x260	380x380	80	300x300	40

SFRC Drain Covers (Plain or Perforated)

(Grade M-25, 30)

Length	Width	Duty	Saucer Drain - 450x300x70, 450x600x70 Kerb Channel - 300x300x50, 300x300x75
600	450	LD, MD, HD, EHD	
600	600	LD, MD, HD, EHD	
1000	500	HD, EHD	
1520	300	HD, EHD	



All dimensions are in MM. We can manufacture any size of manhole / drain covers as per customer requirement. Unless otherwise specified above products are manufactured in M-30 grade with Vibration Technique. Dimensions can be changed as per requirement.



SFRC Manhole Covers & Frames

(Grade M-30)



Code : SK 01
Size : DOME 300 DIA STEM 150



Code : SK 02
Size : HEIGHT 900 DIA 150



SFRC Railing, RCC Tree Guards, Road, Sign Board, Plot Indicator

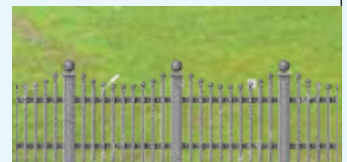
(Grade M-25 to M-30)



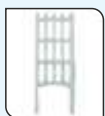
Code : SK 01
Size : Height 1000 Width 1000 Thick. 60
Height 1500 Width 1000 Thick. 60



Code : SK 02
Size : Height 1025 Width 910 Thick. 50



Code : SK 03
Size : Height 990 Width 990 Thick. 50



Code : SKG 01
Size : Height 1800 Width 620 Thick. 30



Code : SKSB 01
Size : Height 1950 Width 1350 Thick. 65



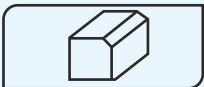
Code : SKI 01
Size : Height 1100 Width 450 Thick. 25



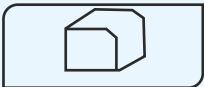


PCC Kerb Stones

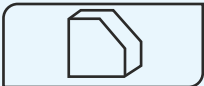
(Grade M-15 to M-35)



Code No.	Height	Length	Thickness
SKS-01	300	300	150
SKS-02	450	300	150



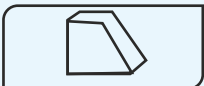
SKS-03	300	300	150
SKS-04	250	300	150



SKS-05	380	400	165x115
SKS-06	250	400	150x75



SKS-07	450	300	150x75
--------	-----	-----	--------



SKS-08	375	400	200x115
--------	-----	-----	---------



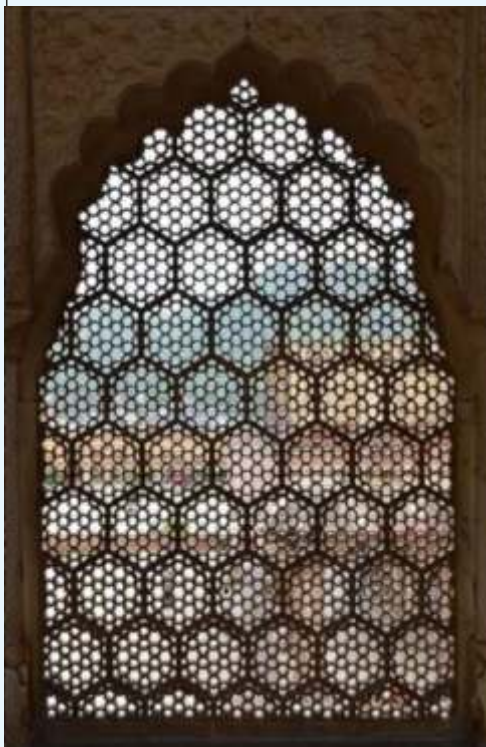
RCC Hume Pipe

IS : 458:2003

Size : Dia 150, 200, 250, 300, 350, 400, 450,
500, 600, 700, 800, 900, 1000, 1200
Pressure Rating : NP-2, NP-3, NP4



GRC Introduction



GRC Versatility

Glass Fibre Reinforced Concrete GRC is one of the most versatile building materials available to architects and engineers.

GRC is not a single material but a family of high-performance cement-based composites reinforced with special alkali resistant glass fibers, which can be engineered to suit a wide range of applications.

GRC Features

GRC is used to produce beautiful architectural mouldings and features. Whilst often cast with thickness and excess freedom for creative design.

Key Features

- GRC can be cast in various fine details.
- GRC offers architects unlimited flexibility in design creation.
- GRC is corrosion free material

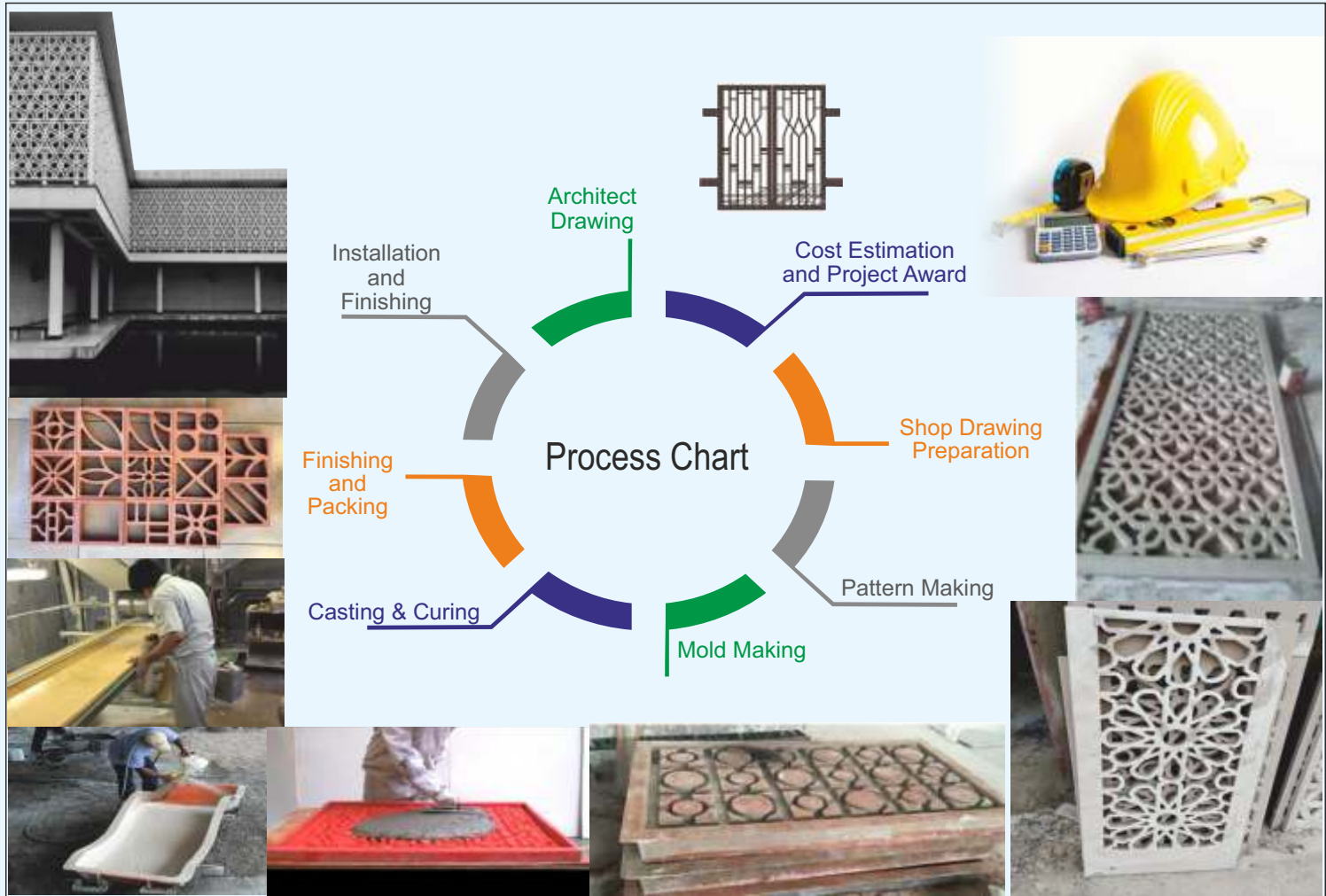
Advantages

• Light Weight • High Strength • High Impact Resistance • Durable • Choice of Color & Texture • No Steel Reinforcement • No Health Risk (GRC Glass Fibre is irreparable unlike asbestos Fibre) • Easy Fixing (Avoid all problems of wet fitting cladding. Can be dry fixed with stainless steel / M.S. fixtures).

GRC Customised Product

GRC is one of the most popular material used for creative, prefabricated architectural cladding, GRC's ability to be moulded into thin, lightweight panels with a wide variety of shapes, forms and surface finished has been appreciated by a growing audience of architects and engineers worldwide. Stone King Industries has a number of GRC products.

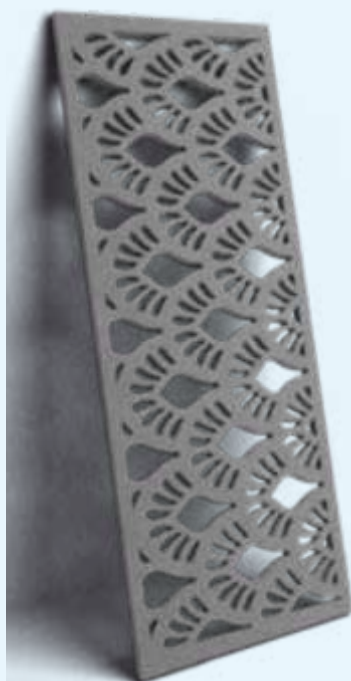
**Screens | Panels | Columns | Mouldings | Handrails
Cornices | Capitals | Arches | Balustrades | Pedestals
Door Surrounds | Window Surrounds | Planters**



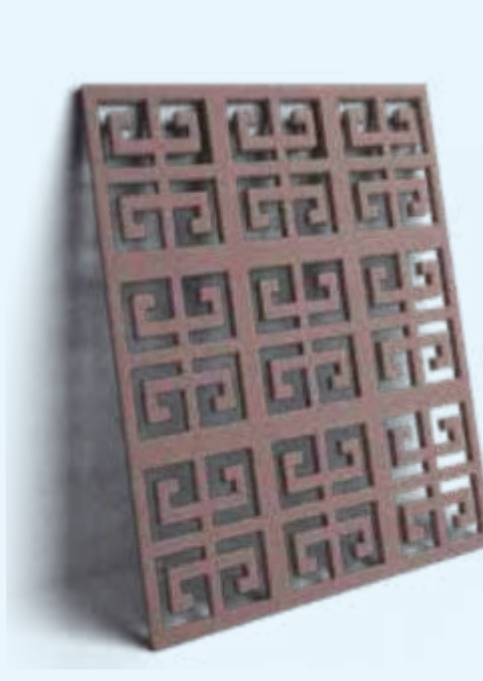
GRC & FRP Screen



SK 28



SK 29



SK 30



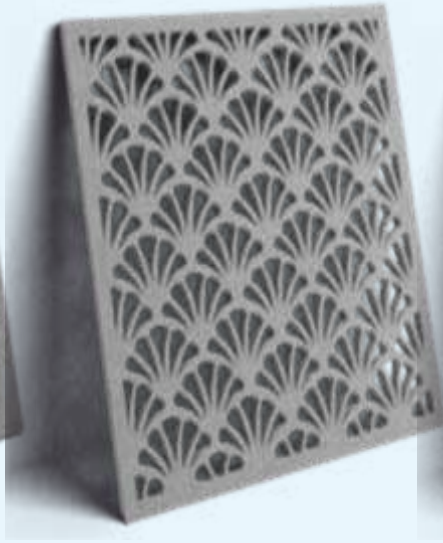
SK 33



GRC & FRP Screen



SK 71



SK 66



SK 72



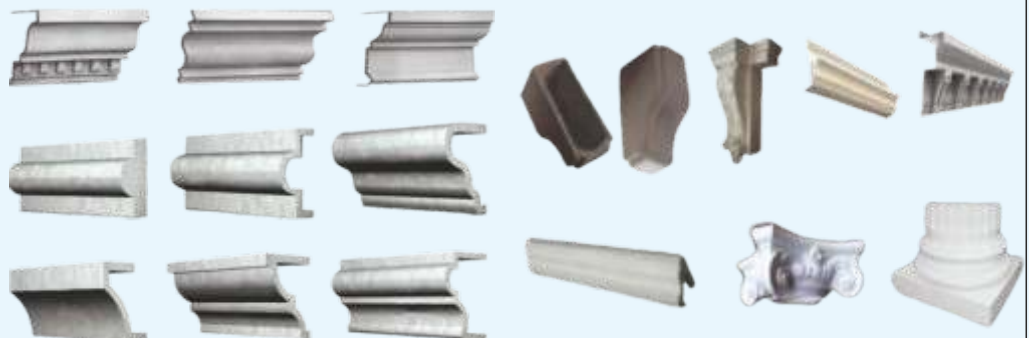
SK 68



GRC & FRP Column



GRC & FRP Moulding, Brackets & Capitals





GRC & FRP Domes, Pargola



GRC Planter



Garden Furniture



Code: SKGF 01
Height:- 750
Dia :-1900



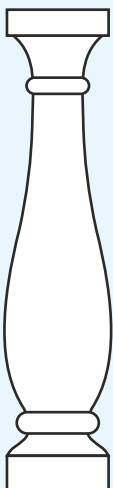
Code: SKGF 02
Height:- 1000
Dia :-1500



Code: SKGF 03
Height:- 1000
Dia :-1500

GRC / RCC / FRP Baluster

Grade M-30





STONE KING

ENTERPRISES

CONCRETE REDEFINED

Office: Near Sambhal Filling Station, Village Begumpur, Distt. Sambhal, Uttar Pradesh-244302
E-mail: stonekingenterprises325@gmail.com **Mob.:** +91-9760694786, 9917106511, 9760264437